



Glenageary Road Upper Travel Active Scheme

Dear Residents,

Dún Laoghaire-Rathdown County Council, in conjunction with the National Transport Authority, has planned Active Travel Improvement Scheme on Glenageary Road Upper between the Sallynoggin and Killiney Towers Roundabouts.

A Lane Closure will be in place from Tuesday, 19th March 2024 to Tuesday 7th May 2024, with a one-way system being maintained 24Hrs from Sallynoggin roundabout to Killiney Towers roundabout in various phases.

From **Tuesday 2nd April until Friday 12th April** a lane closure will be in place from Glenageary Park junction to Adelaide Junction (Westbound lane) for road milling and resurfacing works.

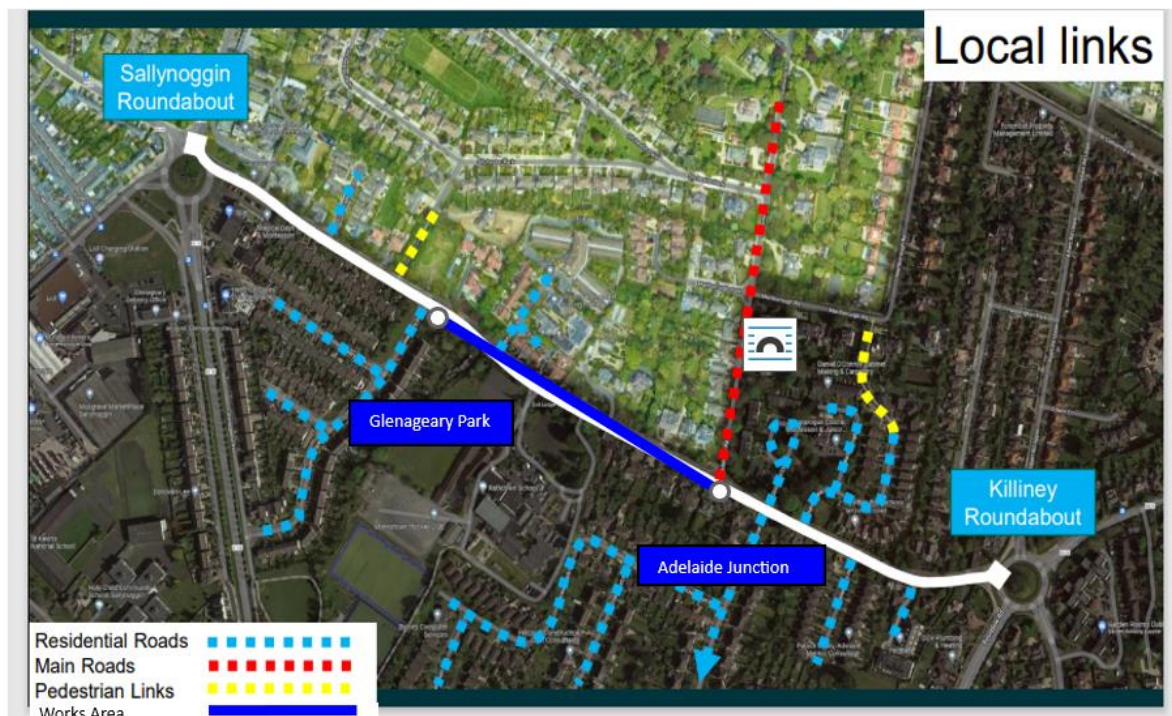
- Residents between 190 - 206 will not be permitted to turn Left towards Sallynoggin Roundabout during this time and must follow the diversion signs.
- The entrance at Rathdown School will be maintained during the works but you will not be permitted to turn right towards Sallynoggin Roundabout during this time and must follow the diversion signs.

Advance notice of diversion routes will be clearly sign posted on all approaches and notification will be given for the various lane closures for each phase for the duration of the works.

Local access will be always maintained, local arrangements can be agreed with the Contractor and the Council site Resident Engineer on particular access requirements.

As always, we appreciate your cooperation with this project.

Scheme Extents



Note: Glenageary Park junction to Adelaide Junction (Westbound lane)

Project Updates

Weekly updates of the scheme will be posted on a weekly basis on the Contractor webpage, please see the link below. <https://roadstone.ie/glenageary-road-upper-active-travel-scheme>

Contact details For Project

Darren Jordan (Roadstone Ltd) – 087 172 7123 djordan@roadstone.ie

Traffic management emergency contacts: Emergency number day or night: 087 272 2276