

# AX-S™ Recessed

## Frame & Cover B125

610mm x 610mm

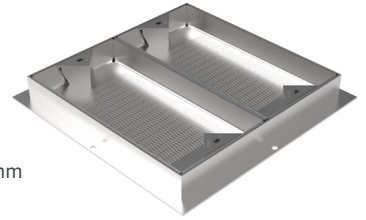


### Product Description

AX-S™ Recessed covers offer a high-quality, safe to use, value for money solution which when installed offers security of the assets below. Available in a wide range of standard and bespoke cover sizes, Recessed multi-cover units offer options in bespoke security and badging.

### Frame Details

Clear Opening:	610mm x 610mm	Frame Weight:	20.8 kg
External Dimensions:	695mm x 682mm	Crosspiece(s):	1 x 665mm x 230mm x 125mm
Including Flange:	770mm x 770mm	Crosspiece(s) Weight:	10.3 kg
Depth:	86mm	Beam(s):	N/A
Tray Depth:	75mm to accept 60mm pavior	Beam Weight:	N/A
Including Beam Pocket:	N/A		



### Cover Details

Cover Type 1:	2 x 668mm x 336mm
Weight:	16.7 kg Each

### Overall Details

Product Code:	FCRS05-06100610-7500*B**2
Total Weight:	64.9 kg

### Installation

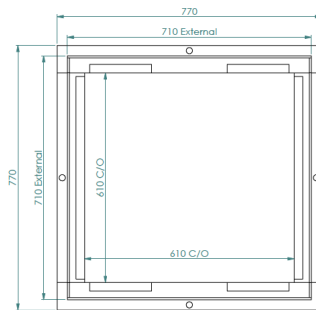
The product is designed for use in footways, pedestrian areas and comparable areas, car parks or parking decks (EN124 Class A15-B125).

### Key Features

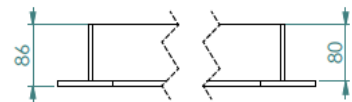
- Easy slide out covers
- No inherent scrap value
- Anti-slip surface



Scan for access to technical documents library



Recessed cross-section top view



Recessed cross-section detail

FCRS-610x610x75-B-2 V.01 17/09/2019